

VOLUME IV FEBRUARY 2016

# CASTROL<sup>®</sup> LUBRICATION EQUIPMENT PROGRAM

High-quality products for the **safe storage** and  
**efficient dispensing** of premium Castrol products





## WARRANTY DETAILS

All equipment listed in this Catalog is covered only by the applicable manufacturer to be free from defects in material and workmanship for a designated time period. Defective equipment must be returned or examined by one of the manufacturers' approved distributors for warranty consideration.

Manufacturers will not warranty equipment for normal wear and tear, for any malfunction, damage or wear caused by faulty installation, misapplication, abrasion, corrosion, inadequate or improper maintenance, negligence, accident or tampering.

# DEAR LUBRICATION EQUIPMENT CUSTOMER,

Since 1994, we have offered high-quality lubrication equipment that allows our customers to store and dispense premium Castrol products in a safe and efficient manner.

**The program features Alemite, our recommended line, as well as Graco and Raasm,** three premium brands with products that have the ability to withstand the toughest demands of any shop. Castrol also provides competitive pricing options to meet the needs of almost any budget.

You will find a range of best-selling products in this catalog, but

it does not include all items available. If you do not see exactly what you are looking for, please contact me and I will be happy to assist you with special orders and product recommendations.

Thank you for your business.

Mark Hinson  
Castrol Lubrication Equipment Manager

**For pricing and/or to place an order, please contact Taylor Pump & Lift at 704.999.0249 or by e-mail at [castrolequipment@taylorpumpandlift.com](mailto:castrolequipment@taylorpumpandlift.com).**



## **Alemite**

Since 1918, Alemite has been supplying quality lubrication systems and equipment to meet the needs of numerous industries. With a commitment to provide innovative products that meet the highest quality standards, Alemite has achieved an international reputation as a leader in designing and manufacturing cost-effective lubrication and fluid handling systems. Alemite is Castrol's recommended brand.

## **Graco**

Founded in 1926, Graco is a world leader in fluid handling systems and components, providing products that move, measure, control, dispense the viscous materials used in vehicle lubrication, commercial and industrial settings. They offer systems, products and technology that set the quality-standard in a wide range of fluid handling solutions.

## **Raasm**

Italian equipment manufacturer Raasm, a marketshare leader in both Europe and Australia, offers high-quality products at competitive prices. Their US distribution center is in North Carolina.





# TABLE OF CONTENTS

BARE PUMPS	4-5
PUMP ASSEMBLIES	6-7
HOSE REEL ASSEMBLIES	8-9
VALVES	10-13
TANK PACKAGES	14-15
TANK ASSEMBLIES	16-17
AIR-OPERATED DOUBLE-DIAPHRAGM PUMPS	18-19
USED OIL	20-21
MISCELLANEOUS	22-25
MOBILE EQUIPMENT	26-27



# BAREPUMPS

DESCRIPTION	MANUFACTURER PART NUMBERS		
	Alemite	Graco	Raasm
<b>Transfer Pumps</b>			
Stubby	7222-B4	N/A	N/A
Drum length	7216-B	N/A	N/A
Tank length, 275 gal.	7222-B4+338147-4	N/A	N/A
7.1 stub	N/A	N/A	90C/71-55
<b>Oil Pumps</b>			
Stubby	8568-A4	203-876	36161-55
16 gal. cover	9960	225-094	
55 gal. bung	8568-A4WT	204-254	
Tank length, 275 gal.	8568-A4WT	N/A	N/A
<b>Grease Pumps</b>			
	9911-1	N/A	N/A
	9950-1	N/A	N/A
	9979	N/A	N/A
35 lb. pail	9911-1	239-877	N/A
120 lb. drum	331380-A5	239-887	62174-55
400 lb. drum	331380-B5	239-888	62195-55
<b>High Volume Oil Pumps</b>			
Stubby	7783-C4	N/A	N/A
55 gal. drum	7783-A4	N/A	N/A
<b>High Volume Grease Pumps</b>			
55 gal. drum	7784-A4	N/A	N/A



222-051



222-103



7216-B



8568-A4



9918-A



203-876



36161-55



62174-55



62195-55



239-887



239-888



7783-C4



7783-A4



7784-A4



# PUMP ASSEMBLIES

DESCRIPTION	MANUFACTURER PART NUMBERS		
	Alemite	Graco	Raasm
<b>Oil Pump Assemblies</b>			
with hoses	9968+317803-2+317813-2	N/A	N/A
16 gal. with cover and hoses	8568-A4WT+338371+ 317803-2+317813-2	N/A	N/A
16 gal. portable package	343086	225-728	37502-55
55 gal. with hoses	8568-A4WT+317803-7+317813-7	N/A	N/A
55 gal. with cover and hoses	8568-A4WT+317803-7+ 317813-7+318040	N/A	N/A
<b>Grease Pump Assemblies</b>			
35 lb. with pail, cover and dispense kit	9911-H	222-069	
120 lb. with cover, F-P and hoses	8550-A1	225-014	
120 lb. with cover, caster, F-P and dispense kit	343084	225-006	64144-55
120 lb. with cover, cart, F-P and dispense kit	9951-T1	N/A	
400 lb. with cover and follower plate	343085	225-016	64194-55
120 lb. kit for lube truck	8550-A1+321340	222-085	
400 lb. kit for lube truck	8559-B+324831	222-071	



225-094



225-728



225-640



222-069



225-014



225-006



225-016



9911-H



8550-A1



8559-B



343086



343084



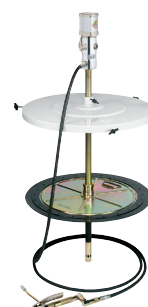
343085



37502-55



64144-55



64194-55





# HOSE REEL ASSEMBLIES

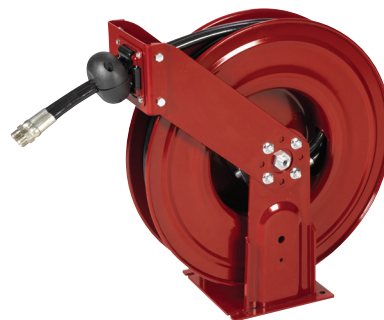
DESCRIPTION	MANUFACTURER PART NUMBERS		
	Alemite	Graco	Raasm
<b>Light Duty Series</b>			
Grease, 1/4 in. x 35 ft.	8078-A	N/A	N/A
Oil, 1/2 in. x 25 ft.	8078-C	N/A	N/A
CR, 1/4 in. x 40 ft.	8078-A	N/A	N/A
CR, 3/8 in. x 40 ft.	8078-F	N/A	N/A
CR, 1/2 in. x 25 ft.	8078-C	N/A	N/A
Oil, 1/2 in. x 25 ft. (enclosed)	8079-C	N/A	N/A
CR, 1/4 in. x 40 ft. (enclosed)	8079-F	N/A	N/A
CR, 3/8 in. x 40 ft. (enclosed)	8079-F	N/A	N/A
CR, 1/2 in. x 30 ft. (enclosed)	8079-C	N/A	N/A
Grease, 1/4 in. x 20 ft. (enclosed)	8079-A	N/A	N/A
<b>Medium Duty Series</b>			<b>40 ft. Hose Reel</b>
Air/water, 3/8 in. x 60 ft.	8078-F	N/A	N/A
MP, 1/2 in. x 50 ft.	8078-D	N/A	8430.000-55MP
MP, 1/2 in. x 75 ft.	N/A	82075 OMP	N/A
HP, 1/4 in. x 50 ft.	8078-G	N/A	N/A
HP, 1/4 in. x 75 ft.	N/A	81075 OHP	N/A
HP, 3/8 in. x 50 ft.	8078-T	N/A	8430.000-55HP
LP, 1/2 in. x 50 ft.	8078-M	N/A	N/A
<b>Heavy Duty Series</b>			
Reelcraft Grease 3/8 in. x 75 ft.	810750HP	N/A	N/A
Grease, 3/8 in. x 50 ft.	8081-J	N/A	8530.500-55HP
Oil, 1/2 in. x 50 ft.	8081-D	N/A	8530.000-55MP
Oil, 1/2 in. x 100 ft.	8080-H	N/A	N/A
Reelcraft Oil 1/2 in. x 75 ft.	820750MP	N/A	N/A
LP, 1/2 in. x 50 ft.	8081-G	N/A	N/A



8078 Series



810750HP



8081



82075 OMP



8080-H



8430 Series



8530.500-55HP



8530.000-55MP

# VALVES

DESCRIPTION	MANUFACTURER PART NUMBERS		
	Alemite	Graco	Raasm
<b>EM5 Electronic Meters</b>			
EM5 rigid	3622/3670	256-215	37787-55
EM5 flexible	3671-B	255-751	37739-55
EM5 90 deg.	3623/3673	238-463	N/A
<b>EM6 Electronic Meters</b>			
EM6 rigid, U.S. measure	N/A	243-599	N/A
EM6 gear lube, U.S. measure	3623	243-600	N/A
EM6 flexible, U.S. measure	3671	243-601	N/A
EM6 rigid, metric	N/A	243-602	N/A
EM6 gear lube, metric	3623	243-603	N/A
EM6 flexible, metric	3671	243-604	N/A
<b>PM5 Electronic Meters</b>			
PM5 rigid	3640-1	256-216	N/A
PM5 flexible	3641-1	255-277	N/A
PM5 90 degree ext.	3643-1	238-515	N/A
<b>EM12 Electronic Meters</b>			
EM12 metered assembly U.S. w/rigid ext. (1/2" inlet)	3674-C	238-640	N/A
EM12 metered assembly U.S. w/rigid ext. (3/4" inlet)	3674-C+130659	238-636	N/A
EM12 metered assembly U.S. w/flexible ext. (1/2" inlet)	N/A	238-641	N/A
EM12 metered assembly U.S. w/flexible ext. (3/4" inlet)	N/A	238-637	N/A
EM12 metered assembly metric w/rigid ext. (1/2" inlet)	3674-CL	238-642	N/A
EM12 metered assembly metric w/rigid ext. (3/4" inlet)	3674-CL+130659	238-638	N/A
EM12 metered assembly metric w/flexible ext. (1/2" inlet)	N/A	238-639	N/A
EM12 metered assembly metric w/flexible ext. (3/4" inlet)	N/A	238-643	N/A

**VALVE PRODUCTS continued on page 12**





243-599



256-215



255-751



256-216



255-277



3671-B



3670



3674-C high volume



3640-2



3641-2 with flexible hose



37739-55



37787-55



# VALVES

DESCRIPTION	MANUFACTURER PART NUMBERS		
	Alemite	Graco	Raasm
<b>V5 Valves</b>			
V5 non-metered with rigid extension	7498	247-712	N/A
V5 non-metered with gear lube extension	7492	247-714	N/A
V5 non-metered with flexible extension	7498-A	247-713	N/A
<b>V12 Valves</b>			
Bare valve (1/2" inlet)	339100/7836-C1	238-647	N/A
Bare valve (3/4" inlet)	N/A	238-646	N/A
V12 non-metered valve with rigid ext. (1/2" inlet)	7498-C+339139+340084	238-651	N/A
V12 non-metered valve with rigid ext. (3/4" inlet)	N/A	238-644	N/A
V12 non-metered valve with flexible ext. (1/2" inlet)	339100+317813-1+340084	238-652	N/A
V12 non-metered valve with flexible ext. (3/4" inlet)	N/A	238-645	N/A
<b>Mechanical Meter Assemblies</b>			
Pre-Set, 60 quart	3690-C	207-738	N/A
Pre-Set, 60 gallon	N/A	207-739	N/A
Pre-Set, 60 liter	3693-C	207-742	N/A
256-556 pistol, 16 quart	3685-F	256-556	N/A
<b>Grease Valves</b>			
Power Shot booster gun	N/A	202-600	N/A
Pro-Shot grease valve, 1/4" no extension	N/A (6320-3 only)	242-055	N/A
Pro-Shot grease valve, 1/4" with extension	6320-3	242-056	66882-55
Pro-Shot grease valve, 3/8" no extension	6438	242-057	N/A
Pro-Shot grease valve, 3/8" with extension	6438+49136+6304-B	242-058	N/A
<b>Other Valves</b>			
Water bibb	BSWA321	180-685	N/A
Grease z-swivel	B331107	202-577	N/A



238-651



256-556



242-056



180-685



202-577



247-713



7498-C



339100



3690-C



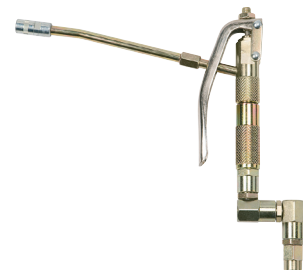
3693-C



3685-F



6320-3



66882-55



# TANKPACKAGES

## WITH JARHEAD TANK GAUGES AND DES-CASE BREATHING FILTERS

DESCRIPTION	MANUFACTURER PART NUMBERS		
	<b>HD SERIES</b> <b>Heavy Duty Package</b> 8568-A4 pump 8078-D reel	<b>MD SERIES</b> <b>Medium Duty Package</b> 9968 pump 8078-D reel	<b>LD SERIES</b> <b>Light Duty Package</b> 36161-55 Raasam pump 8078-D reel
<b>275 Gallon Tank Packages</b>			
Horizontal tank packages (single wall)		PKG275A	
Horizontal tank packages (double wall)		PKG275DWA	
Vertical tank packages (single wall)		PKGV275A PKGV275DWA	
<b>330 Gallon Tank Packages</b>			
Horizontal tank package (single wall)		PKG330A	
Horizontal tank package (double wall)		PKG330DWA	
<b>350 Gallon Tank Packages</b>			
Vertical tank package (single wall)		PKGV350A	
Vertical tank package (double wall)		PKGV350DWA	
<b>500 Gallon Tank Packages</b>			
Horizontal tank package (single wall)		PKG500A	
Horizontal tank package (double wall)		PKG500DWA	
Vertical tank package (single wall)		PKGV500A	
Vertical tank package (double wall)		PKGV500DWA	
Tank package (double wall)		PKG1000DWA	
Tank package (double wall)		PKGV1000DWA	

### ASK HOW

We can customize tank packages to meet the specific needs of your business.  
Packages for larger tank sizes quoted upon request.





# TANK ASSEMBLIES

## WITH JARHEAD TANK GAUGES AND DES-CASE BREATHING FILTERS

DESCRIPTION	MANUFACTURER PART NUMBERS
<b>275 Gallon Tank Assemblies</b>	
Horizontal tank assembly (single wall)	T275H
Vertical tank assembly (single wall)	T275V
Horizontal tank assembly (double wall)	T275DWH
Vertical tank assembly (double wall)	T275DWW
<b>330 Gallon Tank Assemblies</b>	
Horizontal tank assembly (single wall)	T330H6
Horizontal tank assembly (double wall)	T330DWH
<b>350 Gallon Tank Assemblies</b>	
Vertical tank assembly (single wall)	T350V
Vertical tank assembly (double wall)	T350DWW
<b>500 Gallon Tank Assemblies</b>	
Horizontal tank assembly (single wall)	T500
Vertical tank assembly (single wall)	T500V
Horizontal tank assembly (double wall)	T500DWH
Vertical tank assembly (double wall)	T500DWW
<b>1000 Gallon Tank Assemblies</b>	
Horizontal tank assembly (single wall)	T1000 H
Vertical tank assembly (single wall )	T1000 V
Horizontal tank assembly (double wall)	T-STDW1000-C
Vertical tank assembly (double wall)	T1000 DWV
<b>1500 Gallon Tank Assembly</b>	
Horizontal tank assembly (double wall)	T-STDW1500-C

### NOTE

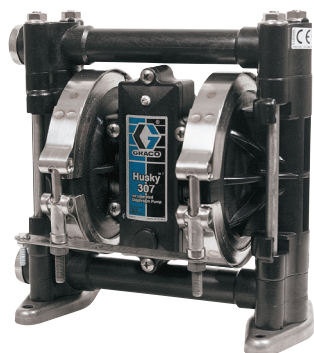
Pump and Reel not included. Please order separately.



# AIR-OPERATED DOUBLE-DIAPHRAGM PUMPS

DESCRIPTION	MANUFACTURER PART NUMBERS
	<b>Graco</b>
<b>307 Pumps</b>	
	D31-255
<b>515/716 Pumps</b>	
	D51-277
	D53-277
	241-906
	243-669
<b>1040 Pumps</b>	
	ARO 666100
	D71-225
	647016
	236-265
	236-267
<b>1590 Pumps</b>	
	DB3-525
<b>2150 Pumps</b>	
	DF3-525





D31-255 Husky 307



243-669 Husky 515



DF3-525 Husky 2150



DB3-525 Husky 1590



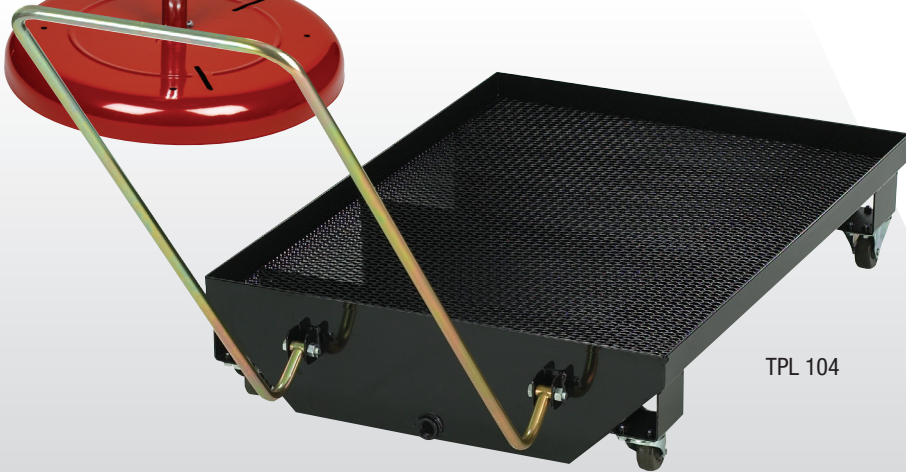
ARO 666100

# USED OIL

DESCRIPTION	MANUFACTURER PART NUMBERS	
	Alemite	Graco
<b>Receivers</b>		
25 gallon oil king used oil receiver	N/A (8586-A – 16gal)	238-866
26 gallon coolant king used coolant receiver	N/A (8586-A – 16gal)	248-632
16 gallon used oil receiver with drum	8586-A	239-301
16 gallon used oil receiver without drum	8586	239-302
Pedestal receiver	N/A	225-272
16 gallon drum	340002	113-926
Standard rolling drain pan	TPL 104	218-969
Narrow rolling drain pan	TPL 105	235-346
<b>Pump Packages</b>		
716 wall mount G.O. evacuation package	N/A	224-955
1040 wall mount G.O. evacuation package	N/A	222-148
716 wall mount drain evacuation package	N/A	224-873
1040 wall mount drain evacuation package	N/A	222-090
Port-evac G.O. evacuation module	N/A	223-695



8586



TPL 104



# MISCELLANEOUS

DESCRIPTION	MANUFACTURER PART NUMBERS
<b>Regulator/Gauge Assembly</b>	C07
<b>Alemite</b>	
Narrow coupler	B308730
Cartridge gun	500
Pistol type gun	555
35# grease pump	7531-4
Standard coupler	6304B
<b>National Spencer</b>	
120# band dolly	120-S
Drum cradle with wheels	135
400# band dolly	140-S
35# pail pump	321
120# pail pump	336
3/4" barrel faucet	81
Drum pump	382
<b>Black Knight</b>	
99" tank gauge	BK 3187
12" hand gun extension hose	317850-1
18" hand gun extension hose	317850-1F
Scully gauge	S 3187

*MISCELLANEOUS PRODUCTS continued on page 24*



C07



500



555



7531-4



6304-B



120-S and 140-S



321



336



382



BK 3187



S 3187

# MISCELLANEOUS

DESCRIPTION	MANUFACTURER PART NUMBERS
<b>APEX and GPI</b>	
Rotary transfer pump	F401/W 10' HOSE KIT
Rotary pump with meter	F401/01A31GM
12 volt pump (Graco)	260100
12 volt pump with meter (Graco)	260100/260405
Quart stroke pump	114000-5
115 volt pump (Graco)	260102
115 volt pump with meter (Graco)	260102/260405
Diaphragm pump	114000-5
<b>Hoses</b>	
1/2" oil hose per foot	
3/8" grease hose per foot	
<b>Oil Equipment</b>	
Morrison fill cap w nipple	178
Jarhead	18" to 60"
Jarhead	61" to 72"
42-44" King tank gauges	4489
60" King tank gauges	602





260102



260100



F401/W 10' Hose Kit



114000-5



Jarhead 18" to 60" and Jarhead 61" to 72"



4489 and 602

# MOBILEEQUIPMENT

**The Castrol Program offers a complete line of mobile lubrication equipment including custom-built lube trucks, lube skids and slide-in units.**

For more information, including brochures and pricing, please contact Taylor Pump & Lift at 704.999.0249 or e-mail [castrolequipment@taylorpumpandlift.com](mailto:castrolequipment@taylorpumpandlift.com).











# 120 YEARS OF TRADITION.



**FIELD TESTED. FLEET TRUSTED.™**